



Tables and charts

To insert tables or charts in articles/books published by the ICSR Mediterranean Knowledge, please follow these rules.

Title

Title above the table/chart, with sequence number, in Palatino Linotypes, Italics, 11 pt. (for Journal of Mediterranean Knowledge) or Times New Roman, Italics, 12 pt. (for Working Papers and Book Series) Examples:

Table 1. Alpha, Bravo, Charlie

Table 2. Delta, Echo, Foxtrot

Chart 1. Alpha, Bravo, Charlie

Source

Report the source below the table/chart, in Palatino Linotypes, Italics, 9 pt. (for Journal of Mediterranean Knowledge) or Times New Roman, Italics, 10 pt. (for Working Papers and Book Series).

Examples:

Source: Rossi & Davis, 2010, pp. 23-24.

Source: www.mediterraneanknowledge.org/publications.

Reporting the source of each table/chart is mandatory.

Format and font

1) Tables

Font: Palatino Linotypes, Italics, 11 pt. (for Journal of Mediterranean Knowledge) or Times New Roman, Italics, 12 pt. (for Working Papers and Book Series). Italics only for headline and left hand column.

Please use only these formats:

Table 1. Alpha, Bravo, Charlie

	<i>Alpha</i>	<i>Bravo</i>	<i>Charlie</i>	<i>Delta</i>	<i>Echo</i>
<i>1990</i>	10	10	10	10	10
<i>1995</i>	20	20	20	20	20
<i>2000</i>	30	30	30	30	30
<i>2005</i>	40	40	40	40	40

Source: Rossi & Davis, 2010, pp. 23-24.

Table 2. Alpha, Bravo, Charlie

	<i>Alpha</i>	<i>Bravo</i>	<i>Charlie</i>	<i>Delta</i>	<i>Echo</i>
<i>1990</i>	10	10	10	10	10
<i>1995</i>	20	20	20	20	20
<i>2000</i>	30	30	30	30	30
<i>2005</i>	40	40	40	40	40
<i>Total</i>	100	100	100	100	100

Source: Rossi & Davis, 2010, pp. 23-24.

Table 3. Alpha, Bravo, Charlie

	<i>Alpha</i>	<i>Bravo</i>	<i>Charlie</i>	<i>Delta</i>	<i>Total</i>
<i>1990</i>	10	10	10	10	40
<i>1995</i>	20	20	20	20	80
<i>2000</i>	30	30	30	30	120
<i>2005</i>	40	40	40	40	160

Source: Rossi & Davis, 2010, pp. 23-24.

Table 4. Alpha, Bravo, Charlie

	<i>Alpha</i>	<i>Bravo</i>	<i>Charlie</i>	<i>Delta</i>	<i>Total</i>
<i>1990</i>	10	10	10	10	40
<i>1995</i>	20	20	20	20	80
<i>2000</i>	30	30	30	30	120
<i>2005</i>	40	40	40	40	160
<i>Total</i>	100	100	100	100	400

Source: Rossi & Davis, 2010, pp. 23-24.

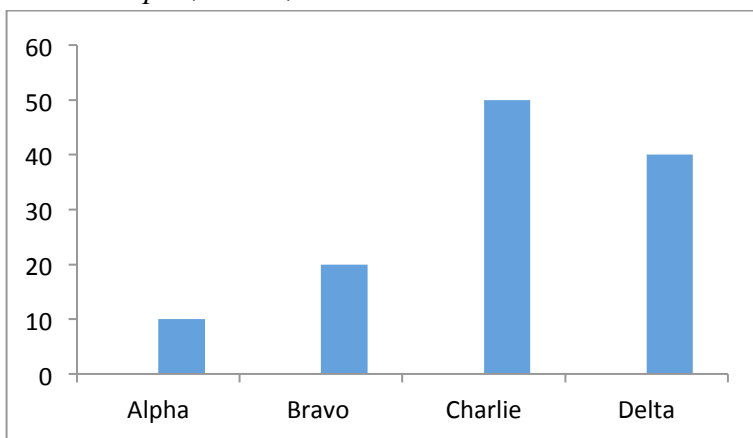
2) Charts

All types of chart are admitted. For labels, legends, series, etc., use font Calibri 10pt (for all the publications of the ICSR Mediterranean Knowledge).

Please use the following formats or similar, with labels and indicators when necessary. Do not use grids; preferably use light blue color.

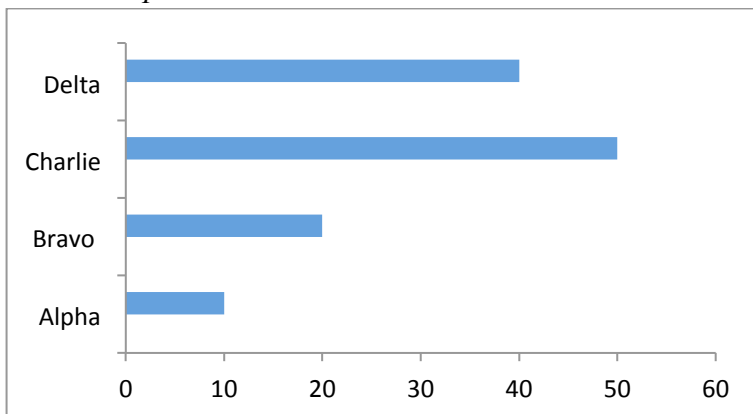
a) Histogram

Chart 1. Alpha, Bravo, Charlie



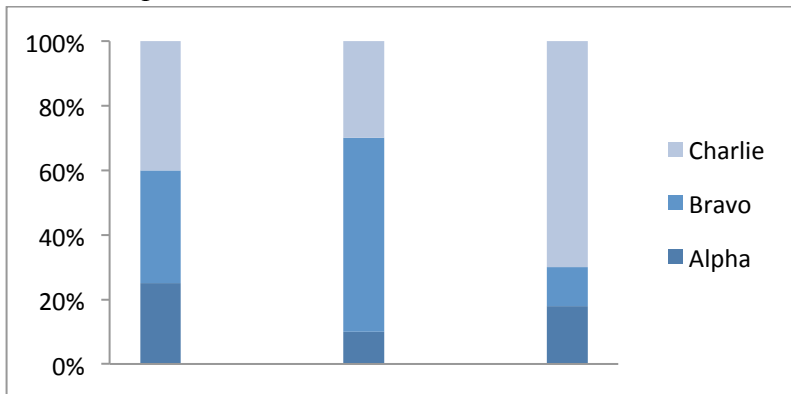
Source: Rossi & Davis, 2010, pp. 23-24.

Chart 2. Alpha, Bravo, Charlie



Source: Rossi & Davis, 2010, pp. 23-24.

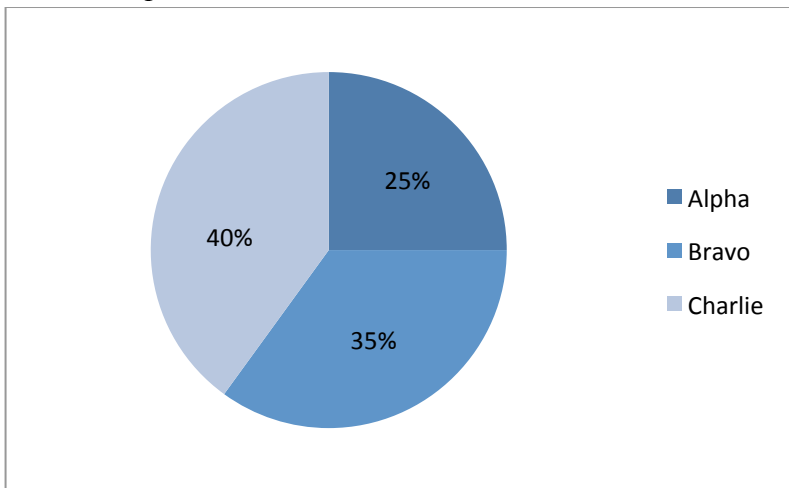
Chart 3. Alpha, Bravo, Charlie



Source: Rossi & Davis, 2010, pp. 23-24.

b) Pie Chart:

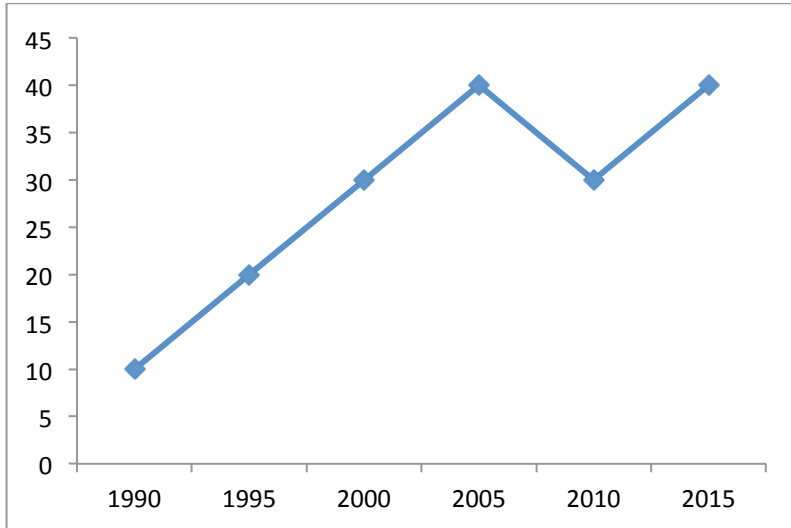
Chart 4. Alpha, Bravo, Charlie



Source: Rossi & Davis, 2010, pp. 23-24.

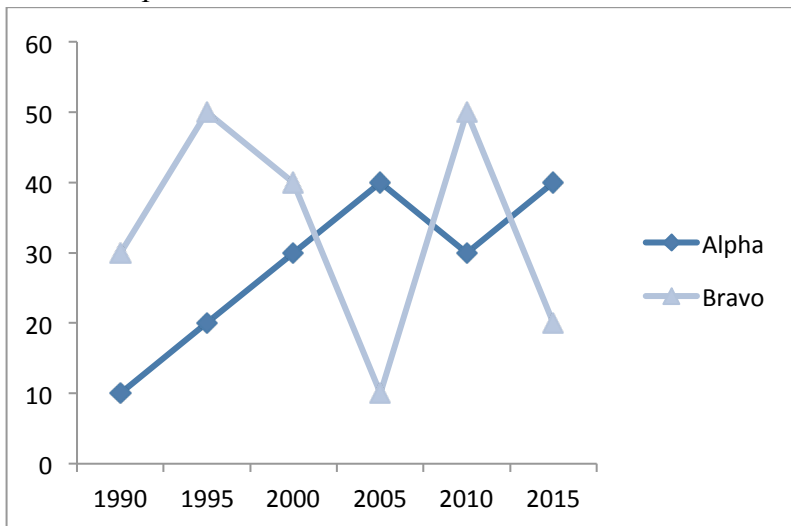
c) Line Chart:

Chart 5. Alpha, Bravo, Charlie



Source: Rossi & Davis, 2010, pp. 23-24.

Chart 6. Alpha, Bravo, Charlie



Source: Rossi & Davis, 2010, pp. 23-24.